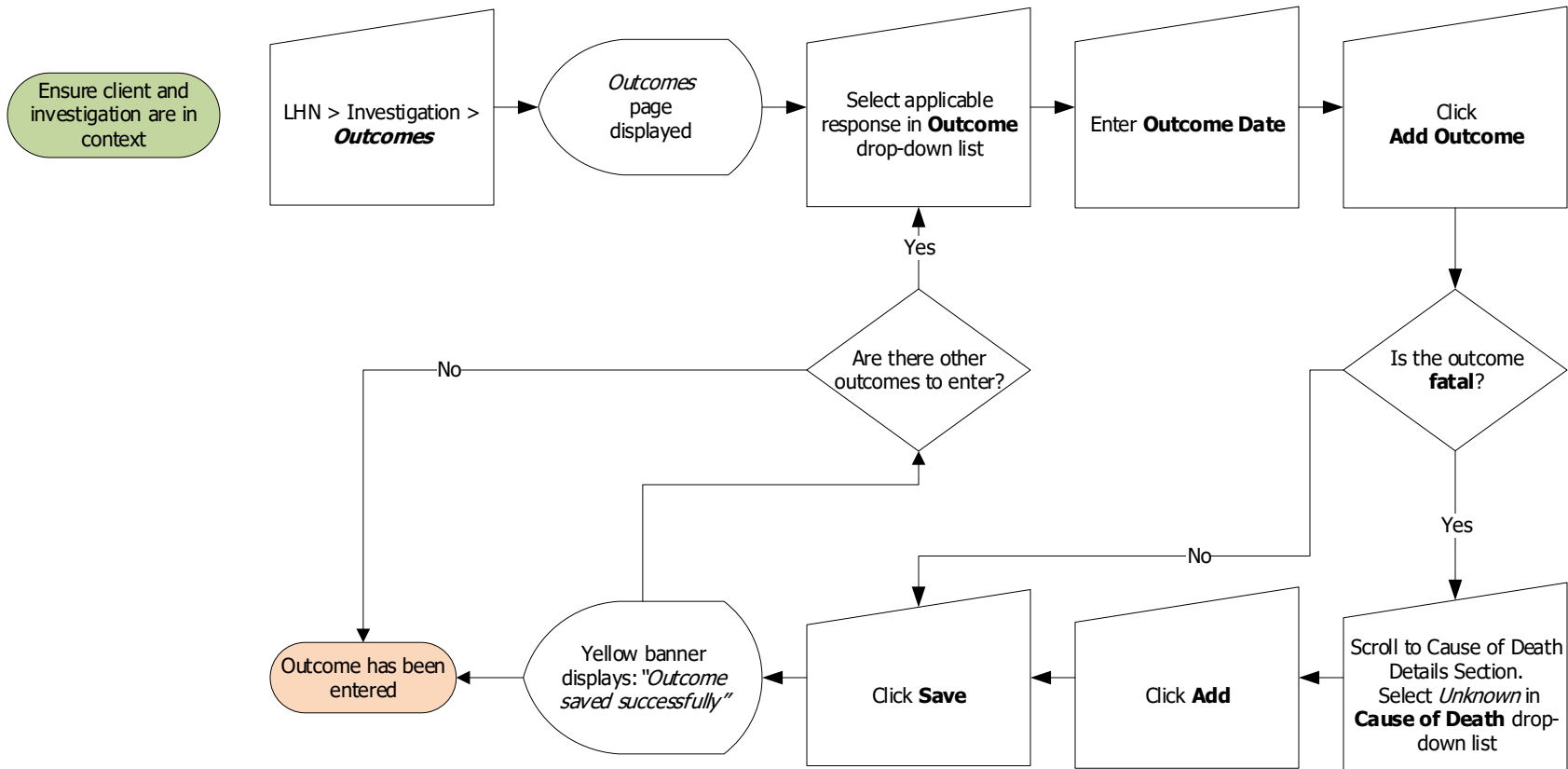




# Investigations: COVID 19 Investigation Outcome Information

QRC 7.19n



## Points to Remember:

- The Intervention Isolation outcome must be "Completed" before closing the investigation
- The Intervention Status Assessment sub-type must be set "recovered" or "fatal" before closing the investigation
- When the outcome is fatal, the client status will change to **Deceased Inactive** when you click save
- Signs and Symptoms – must be updated to "recovered" or "unknown" before closing the investigation
- The Investigation Outcome must be updated, before closing the investigation