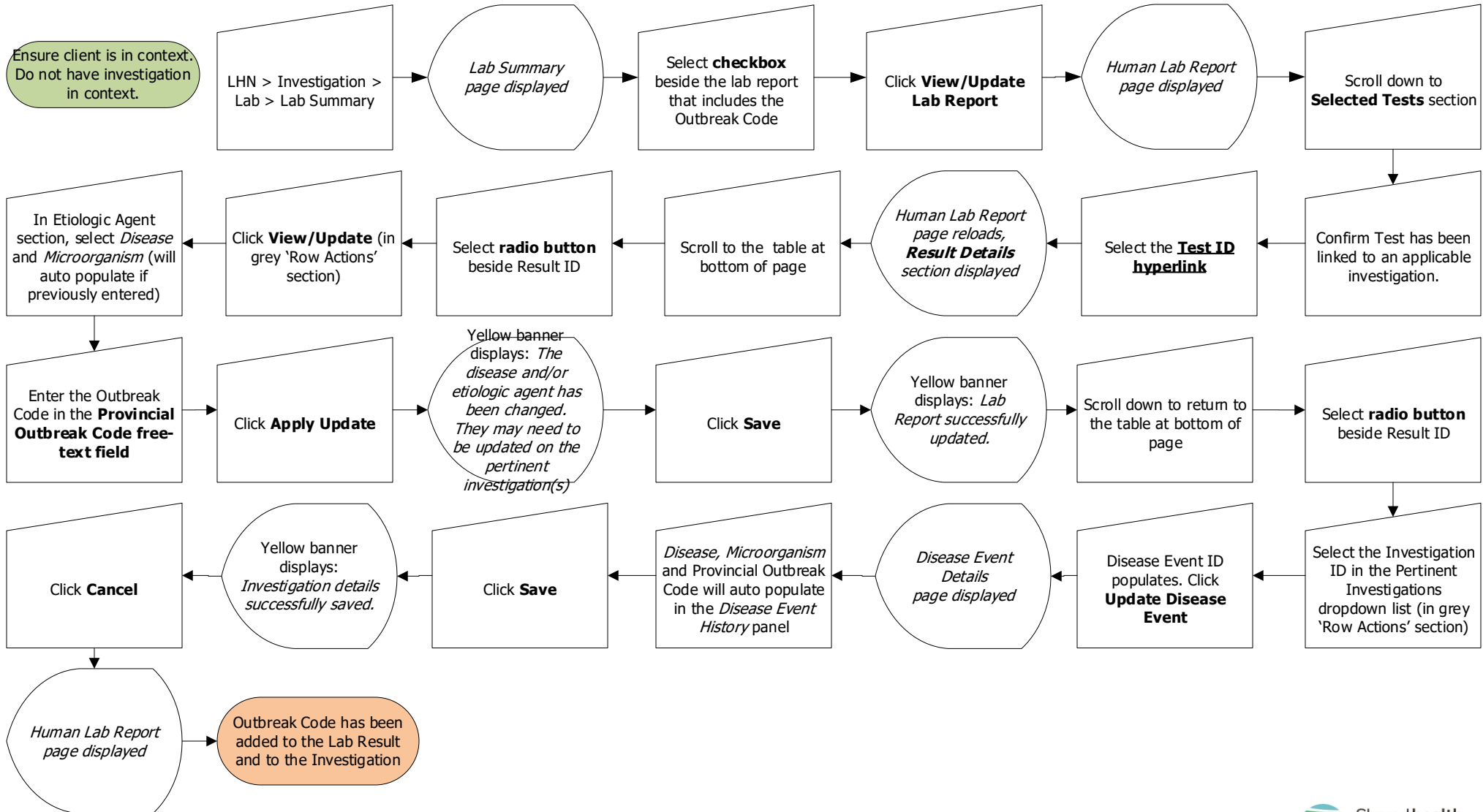




# Add Outbreak Code to Lab Result and Investigation

## Page 1

QRC

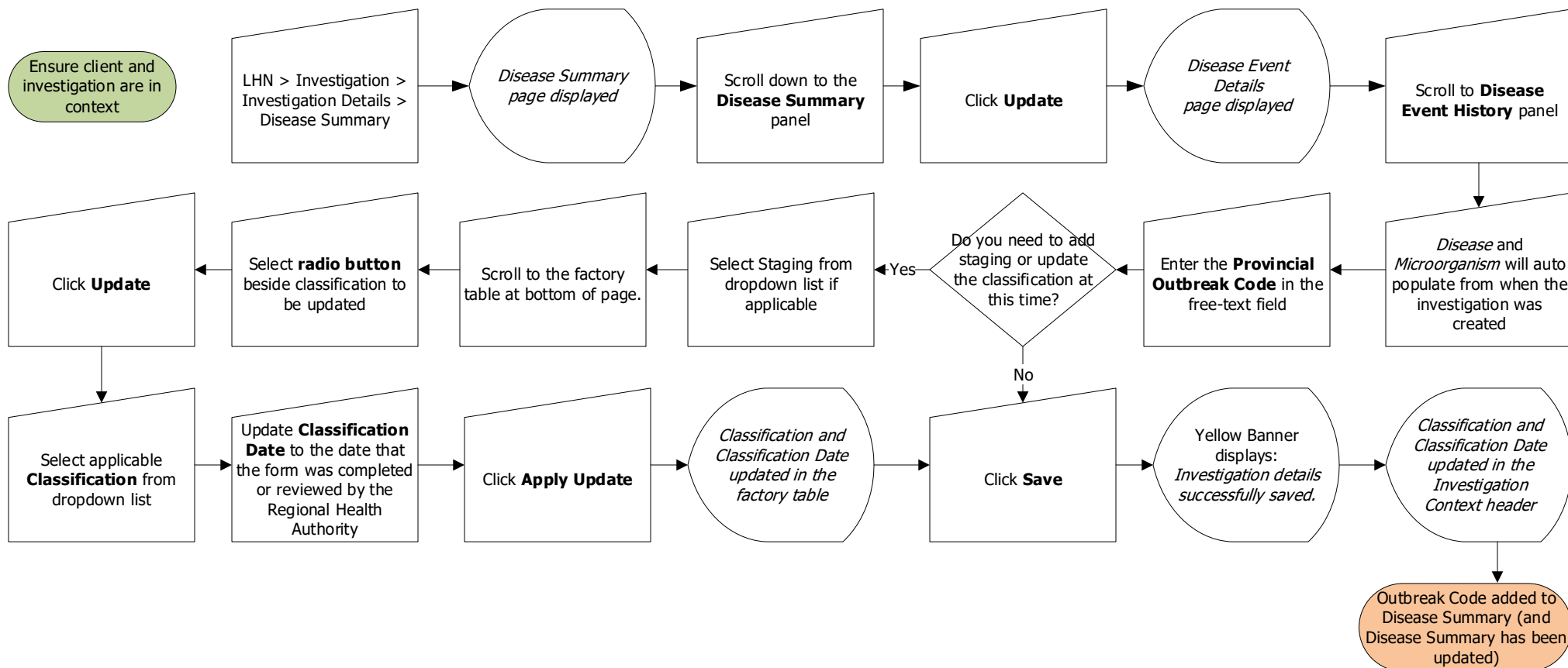




# Add Outbreak Code to Disease Summary

Page 2

QRC



## Points to Remember:

- Outbreak codes are created by Cadham Provincial Lab upon request. The format is OB [2 digits for current year]\_[3-digit code] Example: OB20\_999
- MHSAL Epi Team created Cluster codes to link cases and contacts. The format is similar to the Outbreak Code format, but start with "CL". The cluster code is not related to lab results, so enter it in the Disease Summary.