



# Investigations: Communicable Disease IQE Investigation Quick Entry – IQE Page 1

QRC

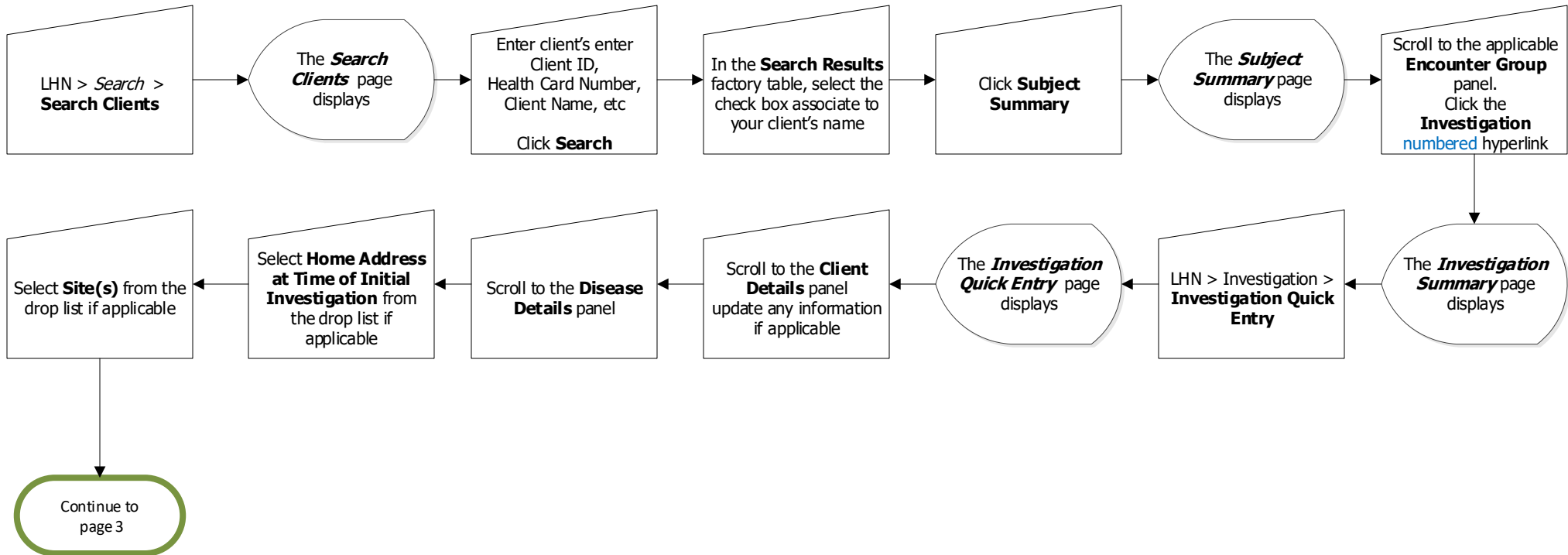
## Points to Remember

- The IQE page allows for a more seamless and integrated workflow for entering investigation information
- Information added before proceeding to the IQE page, will display in grey and will not be accessible.
- A **coinfection** section will display in the **Disease Details** panel if one has been configured; Co-infections are only available for specific STBBI diseases at this time
- Document **Client Details, Disease Details, Signs and Symptoms, Risk Factors, Outcomes, and Medications** before clicking save
- Once saved, the information documented within the panels (*Client Details, Disease Details, Signs and Symptoms, Outcomes, Medications*) will display in grey and could only be updated/added from the **LHN** or by selecting the **For full information and features:** Hyperlink found at the right side of the IQE page.
- The users will need to click **Save** for the **Interventions** preset list to display.
- **Risk Factors** and **Interventions** panels will allow users to document only when the elements are blank, when the elements display in grey they can only be updated from the **LHN** or by selecting the **For full information and features:** Hyperlink.
- **Exposures** panel
  - users will need to select Exposure Quick Entry or Exposure Summary hyperlinks to record a new TE
  - users are able to add a contact to an existing TE from the IQE
  - users are able to update TE from the IQE
- **Immunization Summary** panel will display pertinent existing *agents/date administered*, related to the investigation.
- **Clinical Notes:** once a note is documented and saved from the IQE page, the users will need to access *Notes* from the **LHN** or by selecting the **For full information and features:** Hyperlink to author notes. Only the **most recent** clinical notes authored will display in the Clinical Notes panel on the IQE page.
- Diseases from different Encounter Groups can not be linked into one coinfection (e.g. Salmonellosis, Communicable Disease Encounter Group can not be *added* to a Gonorrhoea, Sexually Transmitted and Bloodborne Infections Encounter Group).
- Co-infections have been configured for specific disease pairings within the Sexually Transmitted and Bloodborne Infections Encounter Group, but there are no co-infections configured for diseases within the Communicable Disease Encounter Group



# Investigations: Communicable Disease IQE Investigation Quick Entry – IQE Page 2

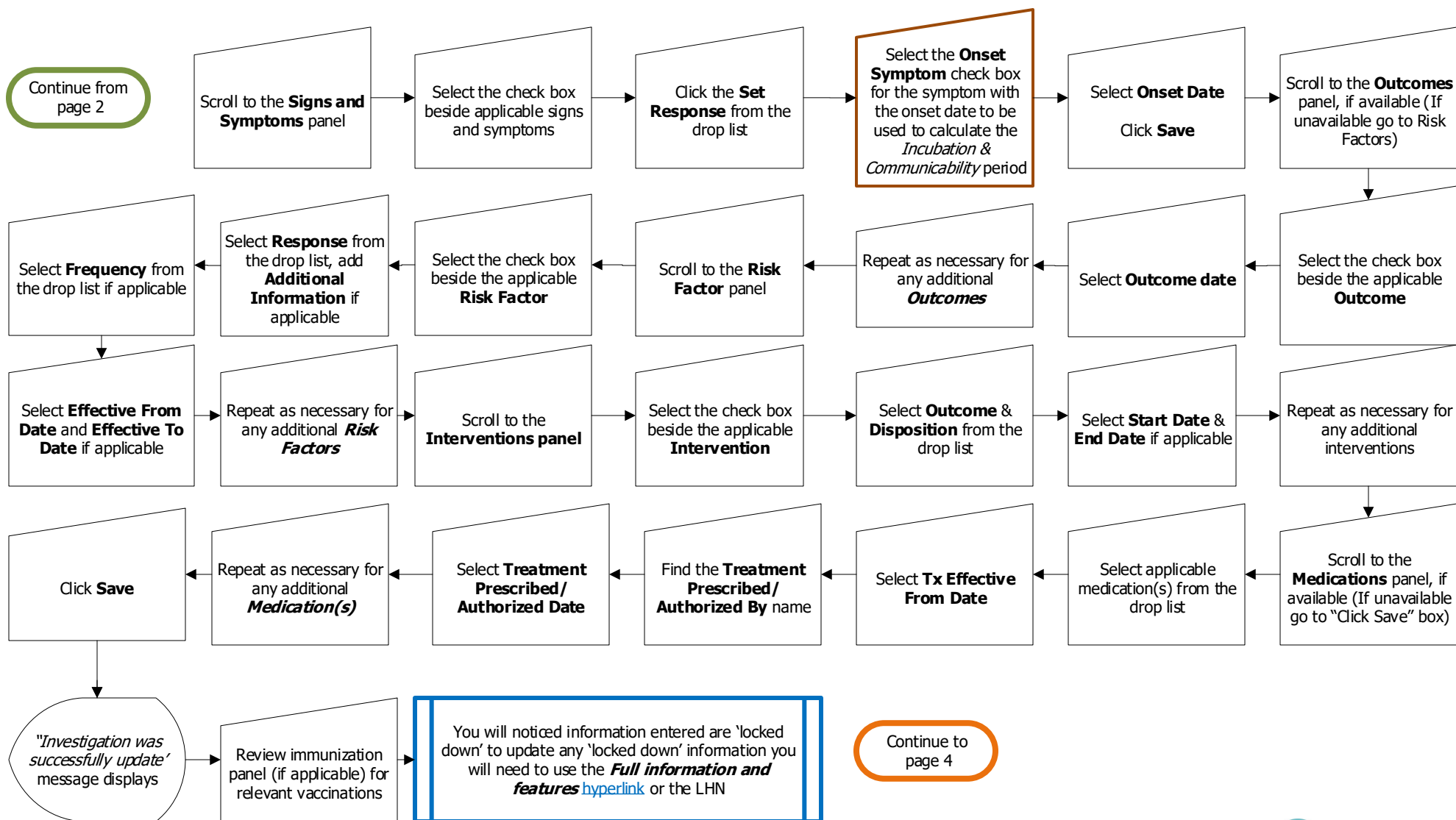
QRC





# Investigations: Communicable Disease IQE Investigation Quick Entry – IQE Page 3

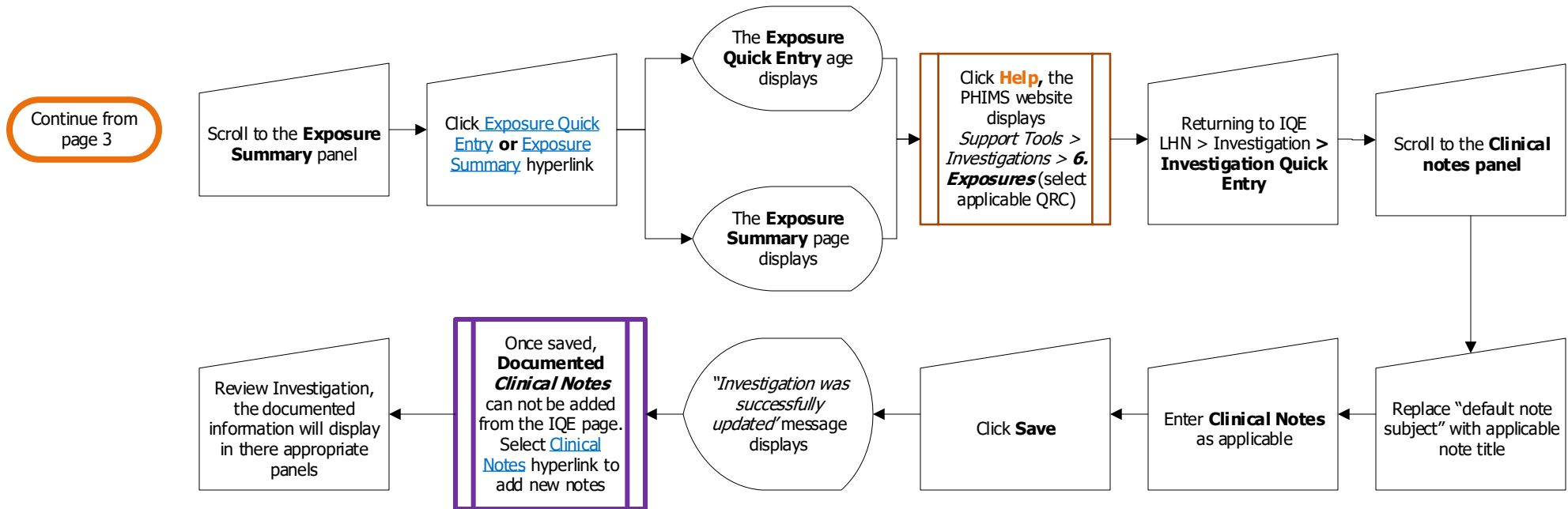
QRC





# Investigations: Communicable Disease IQE Investigation Quick Entry – IQE Page 4

QRC



If at anytime you would like to update the information, click the [hyperlink](#) associated to the **Full information and features** or the LHN feature and follow applicable QRC

**Undocumented** information from the **Risk Factors** and the **Intervention Summary** panels are not 'locked down' and can be added