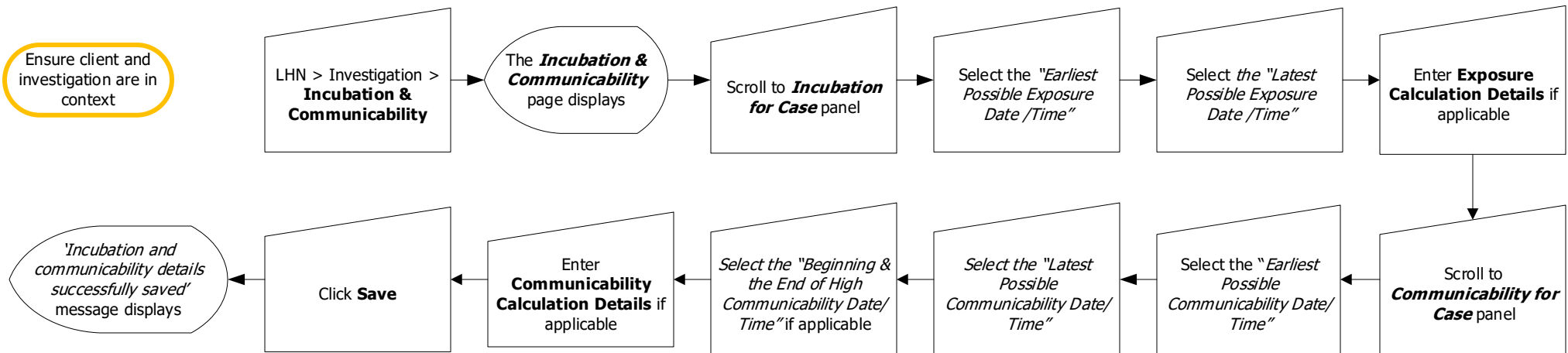




Investigations: *Incubation & Communicability - Add*

QRC



Points to Remember:

- In Signs & Symptoms, enter the onset date for the earliest symptom related to the disease under investigation. Some diseases have specific symptoms that define the incubation and communicability – e.g. rash onset for measles cases. Refer to the protocol for further information on the disease-specific incubation and communicability period.
- Incubation and communicability are calculated based on *Symptom Onset* (PHAC date). The PHAC Date/Type: (in the investigation header), regulates the incubation & communicability date. If the PHAC date is 1900-01-01, select the applicable Sign & Symptom and click "**Set Onset**", the PHAC date will be updated to the Symptom Onset date.