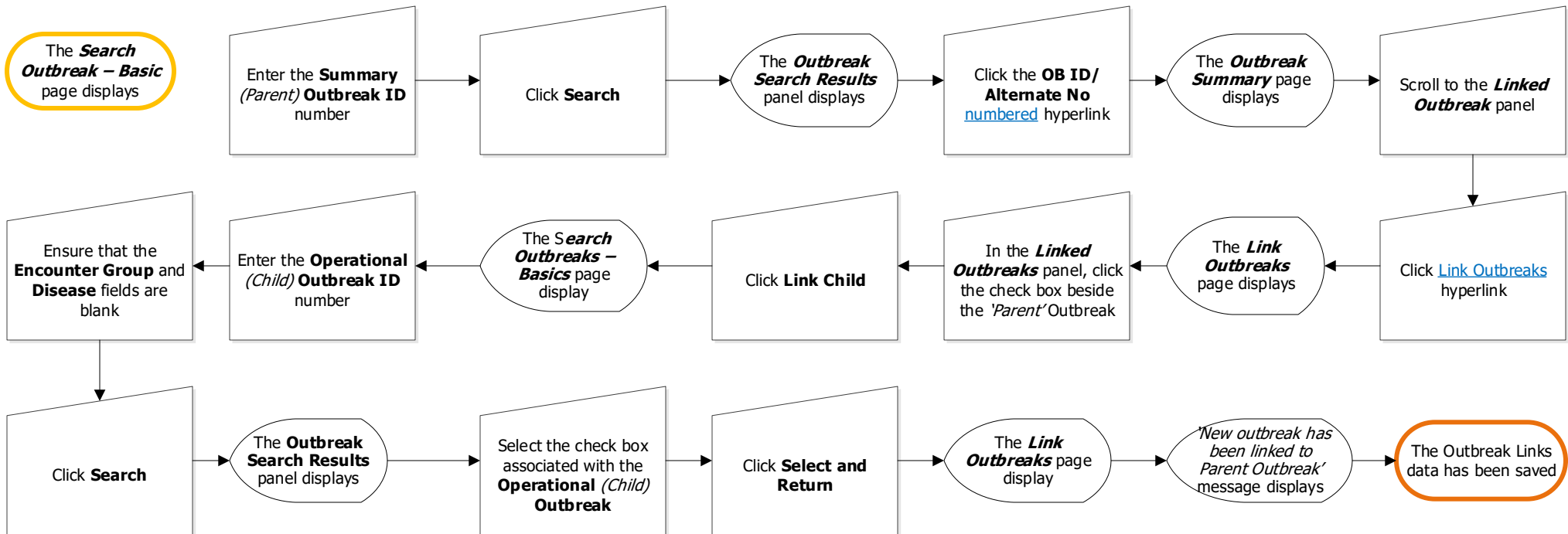




Outbreaks:

Link Outbreak - Operational (Child) to Summary (Parent)

QRC



Points to Remember:

- The **Encounter Group** and the **Disease** **MUST** correspond with the Summary (Parent) Outbreak.
- If not, update the Operational (Child) Outbreak to the Summary (Parent) Outbreak Encounter Group and Disease – **Disease Summary** - QRC