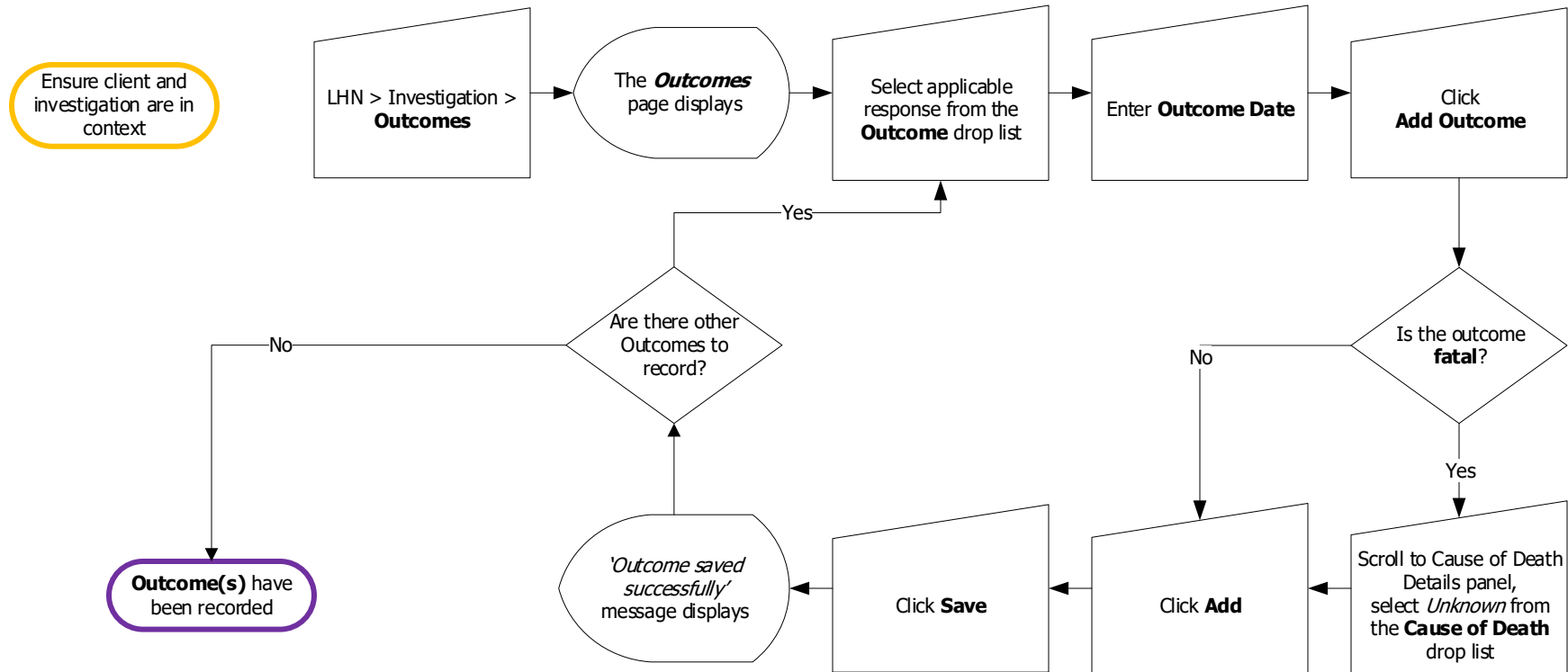




# Investigations: Outcome – Add Information

QRC



## Points to Remember:

### Before CLOSING the Investigation:

- The Intervention Isolation outcome must be "Completed".
- The Intervention Status Assessment sub-type must be set "Recovered" or "Fatal". When the outcome is fatal, the client status will change to **Deceased Inactive** when you click save.
- Signs and Symptoms – must be updated to "Recovered" or "Unknown".
- The Investigation Outcome must be updated.